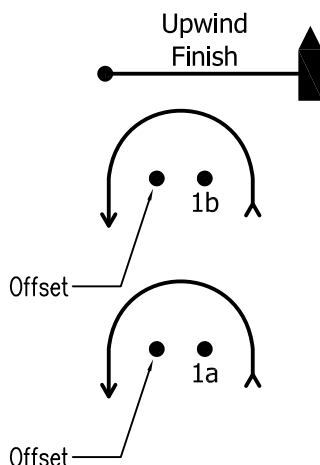


Attachment "A"

Illustrating the Courses

WIND



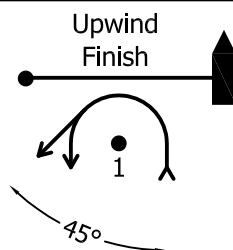
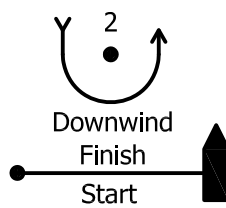
Mark 1b will be set 1.25 to 1.75 times longer than the distance from Mark 2 to Mark 1a. Mark 1b will be a white colored mark. Classes A, B, and Multihulls shall round Mark 1b on the first leg, and Mark 1a thereafter. Other classes shall ignore Mark 1b.

Windward-Leeward Course "W[#]"

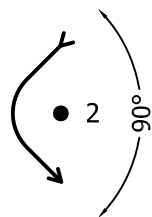
Where # is the number of laps.

Example: W1 - Start-1a or 1b-Offset-Finish Downwind
 W2 - Start-1a or 1b-Offset-2-1a-Offset-Finish Downwind
 W2.5 - Start-1a or 1b-Offset-2-1a-Offset-2-Finish Upwind

The Finish may be upwind or downwind depending on the number of legs.



WIND



Triangle-Windward-Leeward Course "G"

Start-1-2-3-1-Finish Downwind

Triangle-Windward-Leeward-Windward Course "O"

Start-1-2-3-1-3-Finish Upwind

