



BLUEWATER BAY SAILING CLUB

SAILING INSTRUCTIONS BBSC Race to the Park 24 September 2022

RULES The race will be governed by the current 2021-2024 Racing Rules of Sailing (RRS).

SCHEDULE

11:00	Late Registration (@ Schooner's Pavillion)
11:30	Skipper's Meeting
12:55	First Signal
13:00	Start
15:00 ish	Picnic & Awards at Lincoln Park

RACING AREA The racing area will be in waters of Rocky Bayou, Choctawhatchee Bay, Boggy Bayou.

CLASSES X-Class.

RACECOURSE

- Start (in Rocky Bayou, near Wednesday Night Mark, aka "Rocky 2")
- Dropped Mark @ Grass Lake IVO N30-27.66 W086-26.07 Starboard
- Boggy 1 Starboard
- Boggy 3 & Boggy 4 Gate
- Finish (Near the dock at Lincoln Park) Distance = 7.1 NM

START

- The starting line will be set by the race committee in Rocky Bayou.

FINISH

- The finish line will be in the vicinity of the pier/dock extending eastward into Boggy Bayou from Lincoln Park.

TIME LIMIT

- None, but we're going to start the picnic around 3:00 PM.

PENALTIES

A boat may take a One-Turn Penalty when she may have broken one or more rules of Part 2 or rule 31 in an incident while racing. However, when she may have broken one or more rules of Part 2 while in the zone around a mark other than a starting mark, her penalty shall be a Two-Turns Penalty.



BLUEWATER BAY SAILING CLUB

PROTESTS

Protests will be addressed in accordance with the RRS Part 5, and the protest time limit will be 30 minutes after the race committee has returned ashore to Lincoln park. Contact race committee/fleet captain for a protest form.

COMMUNICATION

Competitors should monitor Channel 72 or call race committee at (702) 686-9042.

SPECIAL INSTRUCTIONS

We'll be having a picnic after the race at the Park!! Look for more words and direct questions to Tom Kennedy. We'll also have awards and crew drawing. Expect a launch to be cruising around to bring you from anchor to the park. You may tie up to the pier, but lots of wakes and stuff makes that sporty. I'll come get you.

Be aware of the hazards of the navigational challenges of sailing in Boggy Bayou. Be aware of the possibility of encountering commercial barge traffic in and around Boggy Bayou. The use of auxiliary power to avoid a dangerous situation developing with commercial traffic will not result in a sailing penalty as long as the use of auxiliary power does not provide a competitive advantage.

CONTACTS

RAMSTY Siberski (702) 686-9042 or small-boat-captain@bbsc.com

DISCLAIMER

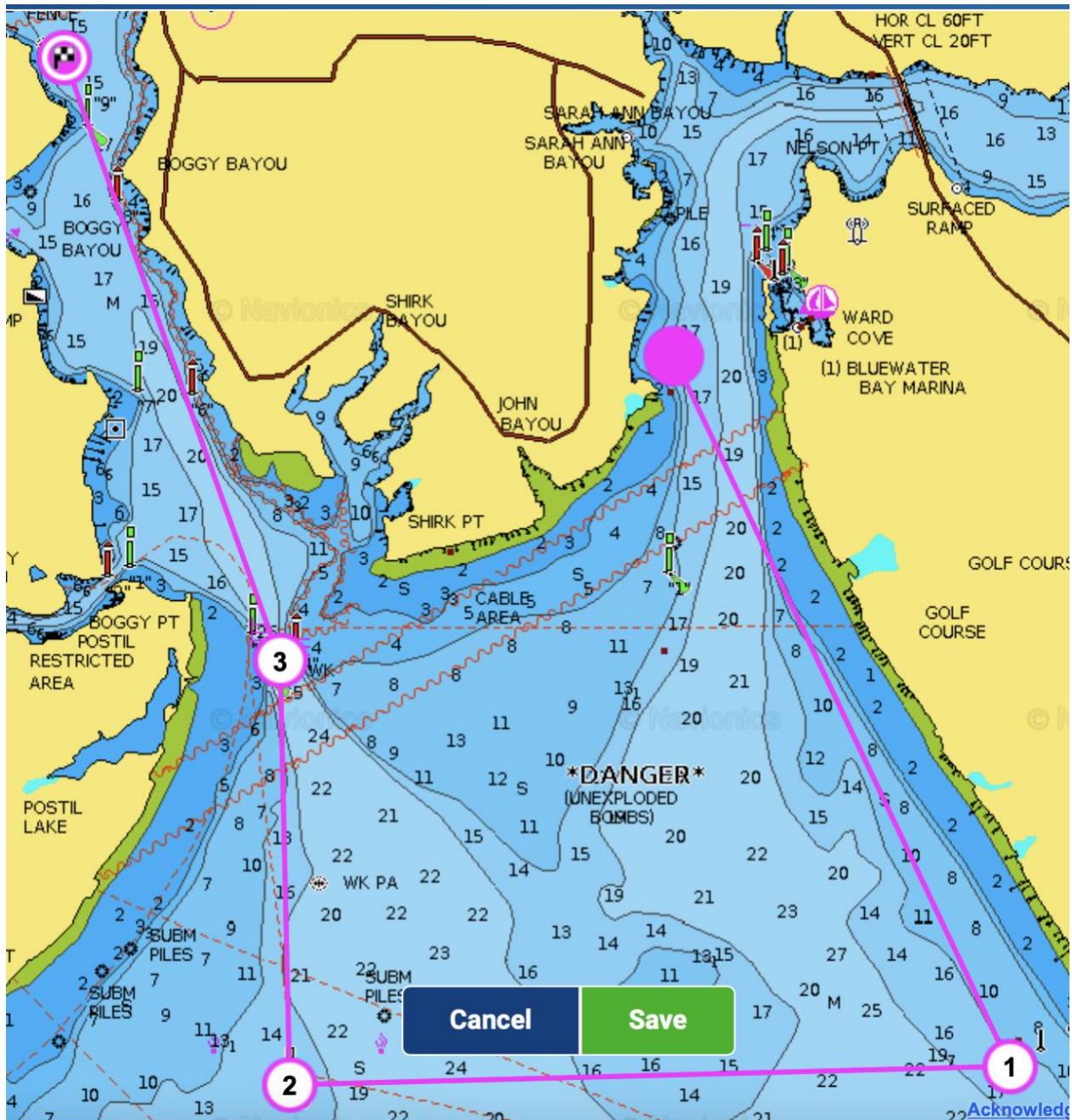
DISCLAIMER OF LIABILITY:

Competitors participate in the regatta entirely at their own risk. See RRS rule 4, Decision to Race. The organizing authority will not accept any liability for material damage or personal injury or death sustained in conjunction with or prior to, during, or after the regatta or regatta related events.



BLUEWATER BAY SAILING CLUB

COURSE DIAGRAM:





BLUEWATER BAY SAILING CLUB

IMPORTANT FLAG SIGNALS:

Class flag per the skipper's meeting

'P' Prep

'X' individual recall

'AP' Postponement (Code flag below)

'L' Come within hail (or follow me)

'S' shortened course

