



# BLUEWATER BAY SAILING CLUB

SAILING INSTRUCTIONS (Version 0)

## BBSC Summer Racing Series – PHRF #3

**“Lady Bug”**

**27 Aug 2022**

**RULES** The race will be governed by the current 2021-2024 Racing Rules of Sailing (RRS).

**SCHEDULE**

12:30 PM	Registration (Schooner's Pavillion)
1:30 PM	Skipper's Meeting
3:00 PM	First Bermuda Start

**RACING AREA** The racing area will be in waters of Choctawhatchee Bay, and Rocky Bayou.

**CLASSES** Spinnaker, and X-Class.

**SPECIAL INSTRUCTIONS** Every sailboat must have a female helmswoman. The helmswoman shall be on the helm for the entire race. Specifically, at a minimum, from 5-minutes prior to the entrant's start time through her finish. Short departures from this rule shall be allowed for bladder relief without question. Longer departures from this rule will absolutely be allowed for abnormal and emergency situations to ensure safety while optimizing crew coordination. Details of longer departures will be declared to the race committee for fairness, and keep in mind this is supposed to be fun, so please don't try to “game” the helm requirement.



# BLUEWATER BAY SAILING CLUB

## RACECOURSE (SRS – 6.7 CW)\*\*

- Start (In Rocky Bayou)
- Grassy 1, IVO N30-27.66 W086-26.07                      Starboard
- Boggy #1    Starboard
- Rocky #1    Port
- Finish (In Rocky Bayou)

Total: 6.7NM

\*\*Alternate course (anti-clockwise of above) may be announced by race committee no later than the skipper's meeting due to winds.

## SHORTENED COURSE

- The race committee may shorten the course at any turning mark, if appropriate.

## START

- The starting line will be in Rocky Bayou in the vicinity of the "Wednesday Night" Mark.
- The start will be a "Bermuda Start" with each boat having a start time adjusted for the handicap rating assigned for their class.
- Both classes will start adjusted from 3:00 PM. The start times will be announced at the skipper's meeting when registration has ended.

## FINISH

- The finish line will be in the same place as the start line.
- **Late Finish / RC not on station:** The race committee *should* be on station to record your finish until sunset. After this time, or if the RC boat is not on station, please finish between the Wednesday night mark and the end of the dock that extends from Schooner's and record your time. Text the info to (702) 686-9042

## TIME LIMIT

No time limit.

## PENALTIES

A boat may take a One-Turn Penalty when she may have broken one or more rules of Part 2 or rule 31 in an incident while racing. However, when she may have broken one or more rules of Part 2 while in the zone



# BLUEWATER BAY SAILING CLUB

around a mark other than a starting mark, her penalty shall be a Two-Turns Penalty.

## **PROTESTS**

Protests will be addressed in accordance with the RRS Part 5, and the protest time limit will be 30 minutes after the race committee has returned to the BWB marina. Provide intent for protest/redress in person or by text to (702) 686-9042.

**COMMUNICATION** Competitors should monitor Channel 72 or call race committee at (702) 686-9042.

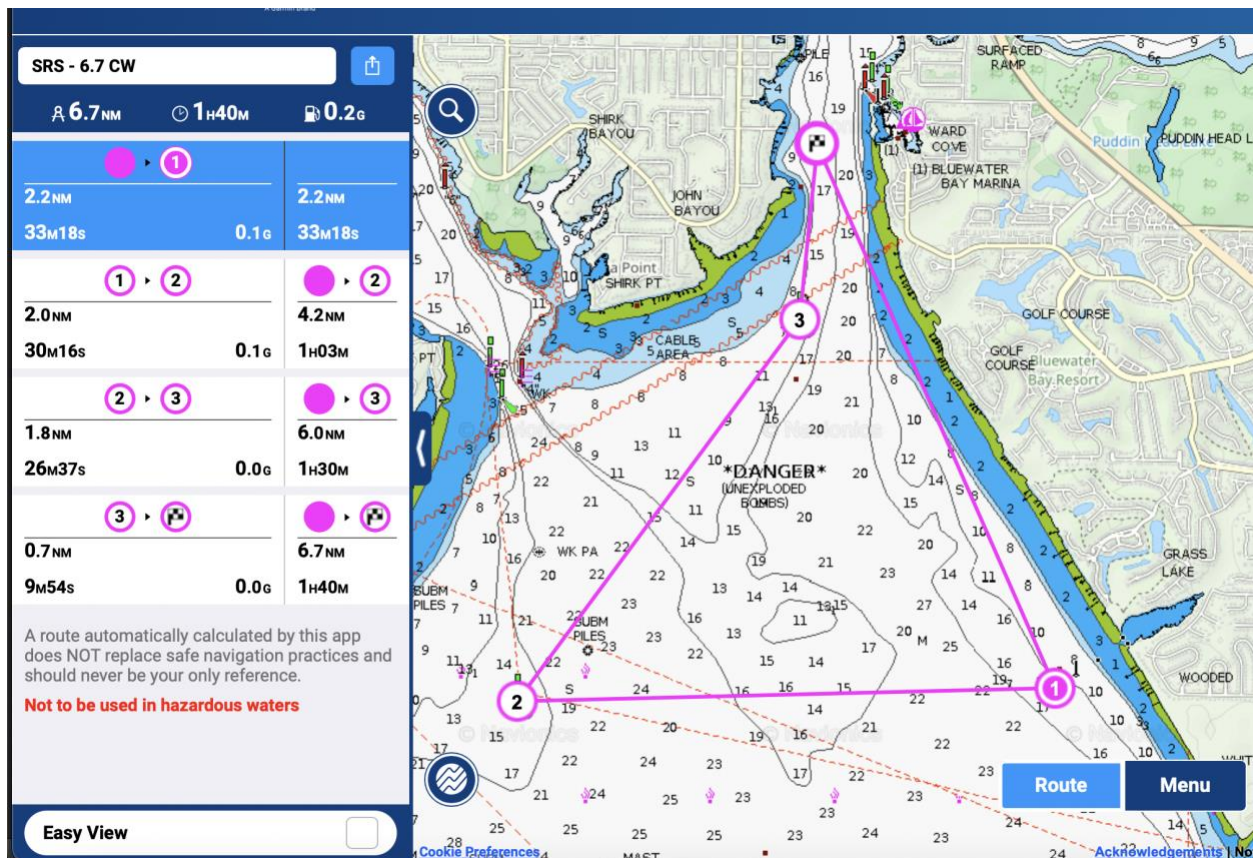
**CONTACTS** RAMSTY Siberski (702) 686-9042 or [small-boat-captain@bbsc.com](mailto:small-boat-captain@bbsc.com)

**DISCLAIMER** **DISCLAIMER OF LIABILITY:**  
Competitors participate in the regatta entirely at their own risk. See RRS rule 4, Decision to Race. The organizing authority will not accept any liability for material damage or personal injury or death sustained in conjunction with or prior to, during, or after the regatta or regatta related events.



# BLUEWATER BAY SAILING CLUB

## COURSE DEPICTION (For Reference Only)





# BLUEWATER BAY SAILING CLUB

## IMPORTANT FLAG SIGNALS:

Class flag

'P' Prep

'X' individual recall

'AP' Postponement (Code flag below)

'L' Come within hail (or follow me)

'S' shortened course

