

# NOTICE OF RACE

## 2020 Catalina 22 National Championship Regatta

June 13-18, 2020

The Catalina 22 National Sailing Association and Fort Walton Yacht Club invite all Catalina 22 owners to attend.

### 1. RULES

1.1 The regatta will be governed by the rules as defined in The Racing Rules of Sailing (RRS).

### 2. ELIGIBILITY AND ENTRY

- 2.1 Entry is open to all Catalina 22s and their skipper/helmsman that meet eligibility criteria as set forth in the Catalina 22 National Sailing Association Class Rules.
- 2.2 Eligible boats/skippers may enter by completing the online entry form or print the attached form and sending it, together with the required fee, to FWYC 180 Ferry Road N.E. Fort Walton Beach, FL 32548.
- 2.3 The C22 Nationals entry form is available at: <http://www.nextsailor.com/regatta/2020C22Nats>  
The optional Bowlegs Regatta ~ C22 Nationals Warmup entry form is available at:  
<http://www.nextsailor.com/regatta/Bowlegs2020>

### 3. FLEETS

- 3.1 Gold Fleet: The National Champion for the Catalina 22 National Sailing Association will be the overall winner of Gold Fleet. No other fleet is competing for the championship trophy.
- 3.2 Silver Fleet: Open to all competitors that have not previously won a regional or national event in any regatta. A minimum of three boats are required to form this fleet. If less than three boats register for Silver Fleet those registered will be registered in Gold Fleet.
- 3.3 Spinnaker Fleet: Open to all competitors that are also registered in either Gold or Silver Fleet. A minimum of three boats are required to form this fleet.

### 4. FEES

- 4.1 Fees include C22 Nationals racing and admission to all social activities for the Skipper and one Crew.
- 4.2 Gold Fleet: \$275  
Silver Fleet: \$275  
Spinnaker Fleet: \$40 (additional)  
Additional Social Tickets: \$75  
Late Fee (after May 15, 2020) \$40

### 5. SCHEDULE

5.1 Number of races: seven (7) races will be attempted for Gold & Silver fleets. Spinnaker Fleet will attempt four (4) races.

#### 5.2 Events:

Sat, June 13	0900 – 1100	Registration/Check-In (C22 & Optional Bowlegs/C22 Nationals Warmup)
Sun, June 14	1000 – 1800	Measurement & Dock Assignment
	1600 – 1800	Registration
	1830 – 2100	Annual Meeting & Dinner following
Mon, June 15	0800 – 0900	Late Registration
	0900	Skippers Meeting
	1030	Spinnaker Fleet First Warning
	1230	Gold Fleet First Warning / Silver Fleet Warning to follow
Tues, June 16 –	1000	Spinnaker Fleet First Warning
Thurs, June 18	1155	Gold Fleet First Warning / Silver Fleet Warning to follow

#### MORE EVENT DETAILS ON REGISTRATION SITE

5.3 On the last day of racing no warning signal will be made after 1300; unless immediately following a General Recall.

## **6. MEASUREMENT**

6.1 Each boat shall produce a valid National Association Measurement Certificate prior to launching.

6.2 Boats unable to comply with Catalina 22 National Sailing Association Class Rule “J. MEASUREMENT” may be inspected, measured, and issued a certificate at the National Regatta. Boats requiring measurement under this rule shall not rig until inspected.

## **7. SAILING INSTRUCTIONS**

7.1 The Sailing Instructions will be online at the Catalina 22 National Sailing Association website and the host website after May 15, 2020 and onsite during registration/check-in.

## **8. VENUE**

8.1 The venue host will be: Fort Walton Yacht Club, 180 Ferry Road N.E. Fort Walton Beach, FL 32548.

8.2 See Attachments A & B

## **9. THE COURSES**

9.1 The racing area will be located east of FWYC on Choctawhatchee Bay.

9.2 The courses will be a Windward/Leeward with an offset and a gate, as indicated in the Sailing Instructions and Attachment C.

## **10. SCORING**

10.1 The Low Point System of Appendix A, Rule A2, will apply; except no score shall be excluded.

10.2 Three (3) races are required to be completed to constitute a Gold Fleet regatta.

10.3 One (1) race is required to be completed to constitute a Silver Fleet and Spinnaker Fleet regatta.

## **11. BERTHING**

11.1 Boats shall be kept in their assigned places when not racing. [DP]

## **12 HAUL-OUT RESTRICTIONS**

12.1 With the exception of a boat that may be in danger of sinking, keelboats shall not be hauled out during the regatta except with and according to the terms of prior written permission of the race committee. In the event a boat is hauled out due to being in danger the skipper/helmsman shall notify the race committee as soon as reasonably possible. [DP]

## **13. RADIO COMMUNICATIONS**

13.1 Except in an emergency, a boat that is racing shall not make voice or data transmissions and shall not receive voice or data communications that is not available to all boats. Radio channel 72. [DP]

## **14. PRIZES**

14.1 Trophies will be awarded for First, Second and Third place for each Fleet.

14.2 The Catalina 22 National Sailing Association will award the Betty Gay Clements trophy to the highest placing female skipper, in accordance with its deed.

14.3 The Catalina 22 National Sailing Association will award the Dick King Memorial Trophy to the highest placing Catalina 22 Sport, in accordance with its deed.

## **15. DISCLAIMER OF LIABILITY**

Competitors participate in the regatta entirely at their own risk. See Rule 4, Decision to Race. Neither the Catalina 22 National Sailing Association nor Fort Walton Yacht Club will accept any responsibility for material damage, personal injury, or death sustained in conjunction with the regatta.

## **16. FURTHER INFORMATION**

FWYC Web Site

[fwyc.org](http://fwyc.org)

FWYC Office

[office@fwyc.org](mailto:office@fwyc.org)

850-243-7102

Fleet Captain – Sam Grant

[fleetcaptain@fwyc.org](mailto:fleetcaptain@fwyc.org)

850-830-5994

Regatta Chair – Brent Purcell

[brentpur@aol.com](mailto:brentpur@aol.com)

850-525-1051

Attachment A

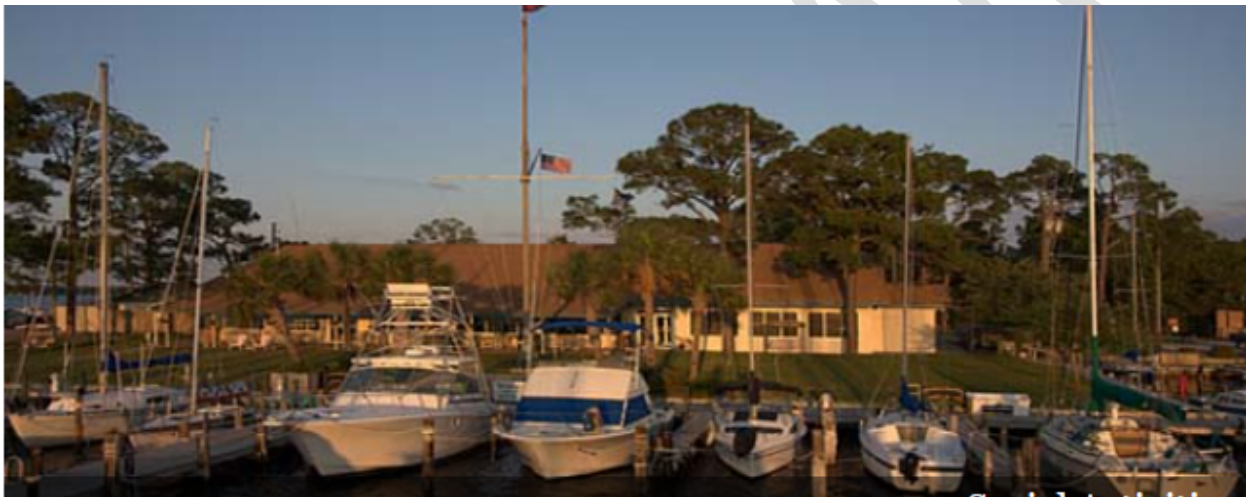
# Fort Walton Yacht Club

30° 25.60' N 86° 35.58' W

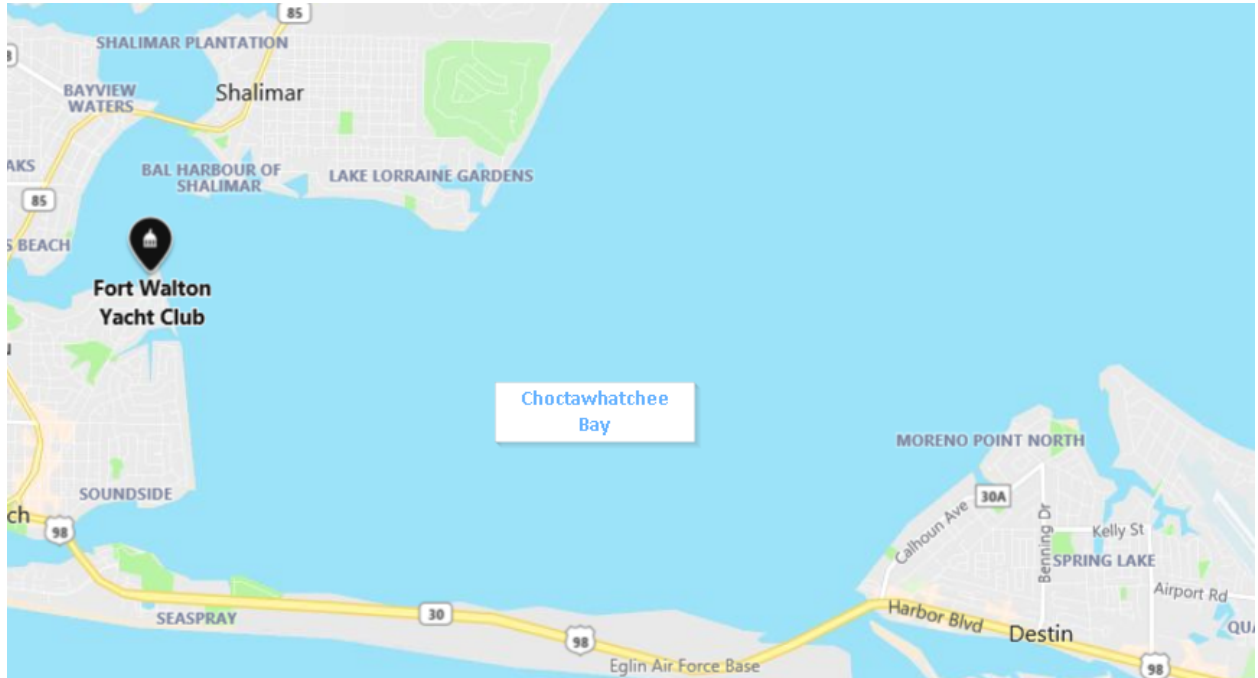
180 Ferry Rd NE

Ft Walton Beach, FL 32548

Phone: 850.243.7102



## Attachment B



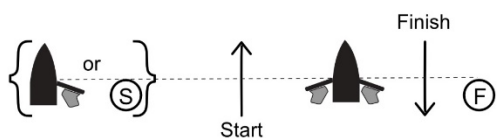
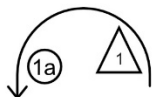
Fort Walton Yacht Club is located on the western end of Choctawhatchee Bay. Racing will be in the Choctawhatchee Bay.

**Catalina 22 National Sailing Association**  
 Course Diagram  
 Attachment C

Pennant 4



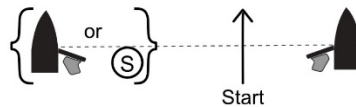
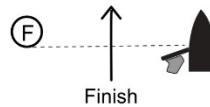
Start - 1 - 1a - 2S/2P - 1 - 1a - Finish



Pennant 5



Start - 1 - 1a - 2S/2P - 1 - 1a - 2S/2P - Finish



PRELIM

**Notice of Race Revision History**

PRELIMINARY