

2025 Spring Regatta
Potomac River Sailing Association, Alexandria, VA

May 24-25, 2025
Washington Sailing Marina, Alexandria, VA
Event website: <https://www.nextsailor.com/app/page/regatta/925>

Regatta Sailing Instructions

1. RULES

These races will be governed by *Rules* as defined in *The Racing Rules of Sailing*, the prescriptions of the US Sailing Association.

2. NOTICES TO COMPETITORS

Notices to competitors will be posted to the Regatta Network website:
<https://www.nextsailor.com/app/page/regatta/925>

3. CHANGES TO SAILING INSTRUCTIONS

Changes to the sailing instructions will be posted no later than 0800 on Saturday, May 24 via the Next Sailor regatta website and on the physical notice board located in the “grove” area at Washington Sailing Marina. Any changes to the schedule of racing will be posted by 2000 on Friday, May 23 on the regatta website only.

4. SIGNALS MADE ASHORE

- 4.1 Signals made ashore will be displayed from the signal boat at the finger pier of the ramp launch.
- 4.2 When flag AP is displayed ashore, the warning signal will be made not less than 45 minutes after the AP flag is lowered. This changes RRS Race Signals “AP.”

5. RACING AREA

- 5.1 Races will be conducted on the Potomac River, between National Airport and Hains Point, Washington, D.C.
- 5.2 Channel-bound vessels within the racing area are obstructions. Boats that are racing must keep clear of such vessels.
- 5.3 Potomac River Safety Zone: a safety zone adjacent to National Airport, extending E-W from the airport shore to the navigation channel and N-S (roughly) from the end of Runway 33 (the gravel “bump out” in the river) to the southern tip of the airport shore. Please see the attached diagrams for reference (the zone is denoted by the “box” diagram on chart #1 and by the pink “T” symbols demarcating a box on chart #2, which is the current NOAA ECR Chart). **Entering the Safety Zone is prohibited.** Competitors should depart WSM, sail east across the river, transit the safety zone

while remaining in the channel (marked by permanent day marks) and then proceed to the race area north of the Safety Zone. Competitors are strongly encouraged to carry radios and monitor VHF 16 while transiting the Safety Zone.

6. PLANNED SCHEDULE & NUMBER OF RACES

- 6.1 Competitors meeting: **1000** on Saturday in the dry sail launch area. There is no competitors meeting on Sunday.
- 6.2 First race for the first class: The warning signal for the 1st race of the day for the first class to start is **1125** on both Saturday and Sunday.
- 6.3 First race for the other classes: There will be a short time interval between the start of one class and the warning for the next class (no rolling starts).
- 6.4 Subsequent races: **The RC may start subsequent races for some classes before all the classes have finished.**
- 6.5 Number of Races: As many races as conditions and time allow.
- 6.6 End of racing: No warning signal will be made after 1530 on Saturday. No warning signal will be made after 1530 on Sunday.

7. ORDER OF STARTS

- 7.1 The order of starts for the first race of the first day will be announced at the competitors' meeting.
- 7.2 Classes with 5 or more competitors will have their own start. Classes with 4 or fewer competitors may be started together.

8. CLASS FLAGS

<u>Class</u>	<u>Class Flag</u>
Multi-hulls	Flying H on yellow
Inland 20s	I-20 on yellow
Lightnings	Red flash on white
Buccaneers	Crossed cutlasses on white
Albacores	AL on white
Flying Scots	FS on red
Lasers	Red laser burst on white

9. COURSES

See "Courses and Marks" attachment (below) for a description of the courses that may be used, including how each will be designated with flags and the direction and order the competitors shall round the marks.

10. MARKS

- 10.1 The marks designated as W, J, and L in the attachment will be orange cylinders.
- 10.2 The offset mark, if used, will be a small orange ball. Flag "O" (Oscar) will be displayed on the signal boat to designate use of the offset mark.
- 10.3 New marks as provided in instruction 12.2 will be large yellow cylinders.
- 10.4 The start pin is a white cylinder with a red flag on top.
- 10.5 The finish pin is a white cylinder with a blue flag on top.

11. THE START

- 11.1 Races will be started using RRS 26, with the warning signal made 5 minutes before the starting signal. A series of short blasts will sound one minute prior to the warning signal.
- 11.2 The start will be between an orange flag on the signal boat and the course side of a small white

cylinder with a red flag.

- 11.3 Boats whose warning signal has not been made shall avoid the starting area during the starting sequence for other classes.
- 11.4 The race committee may attempt to hail On Course Side (OCS) boats. Failure to receive a hail or for a hail to be made, the order of hails made, or failure to receive any communications to the fleet shall not be cause for redress. This changes RRS 62.1(a) and complies with 41(d).
- 11.5 A boat starting later than the start of the next fleet after her start shall be scored Did Not Start (DNS). This changes RRS A4 and A5.

12. CHANGE OF THE FIRST AND SUBSEQUENT LEGS OF THE COURSE

- 12.1 To change the first leg of the course, the race committee will lay a yellow mark and display the C-flag from the signal boat before the warning signal and remove the original mark as soon as practicable.
- 12.2 To change the 2nd or subsequent leg of the course, the race committee will lay a new mark (or move the finishing line) and remove the original mark as soon as practicable. When in a subsequent change a new mark is replaced, it will be replaced by an original mark.

13. THE FINISH

The finish line will be between a blue flag on the RC boat and the course side of a small white cylinder with a blue flag.

14. TIME LIMIT

- 14.1 The time limit will be 90 minutes for the first boat to finish in each class.
- 14.2 Boats still racing 30 minutes after the first boat that sails the course and finishes will be scored TLE (time limit expired). "TLE" will be calculated per rule A5.3. The race committee will have final judgment in this decision. This changes rule 35, rule A4, rule A5.2, and adds "TLE" to scoring abbreviations in A10.

15. PENALTY SYSTEM

- 15.1 RRS/US Sailing Appendix V1 (Penalty at the Time of an Incident) will apply: "A boat may take a One-Turn Penalty when she may have broken a rule of Part 2 or RRS 31 while *racing*. However, when she may have broken a rule of Part 2 while in the *zone* around a *mark* other than a starting *mark*, her penalty shall be a Two-Turns Penalty." This changes RRS 44.1.

16. PROTESTS

- 16.1 Protest forms are available from the Regatta Chair. Protests shall be delivered to the Race Committee within one hour after the official docking of the RC signal boat. The time of docking will be posted on the official Notice Board.
- 16.2 Protests will be heard in approximately the order of receipt as soon as possible.
- 16.3 Protest notices will be posted within approximately 30 minutes of the protest time limit to inform competitors where and when there is a hearing in which they are parties to a hearing or named as witnesses.

17. SCORING

- 17.1 One race is required to be completed to constitute a regatta.
- 17.2 If there are 5 or fewer races, no scores will be excluded. If there are 6 or more races, a competitor's worse score will be excluded. This changes RRS A2.1.
- 17.3 Rule A5.3 will apply (see 14.2, above, as well).

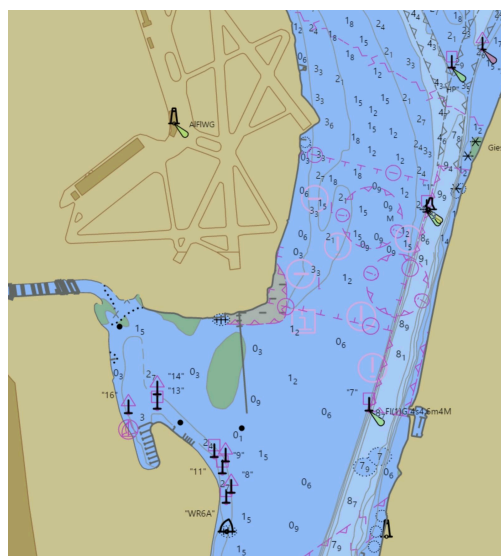
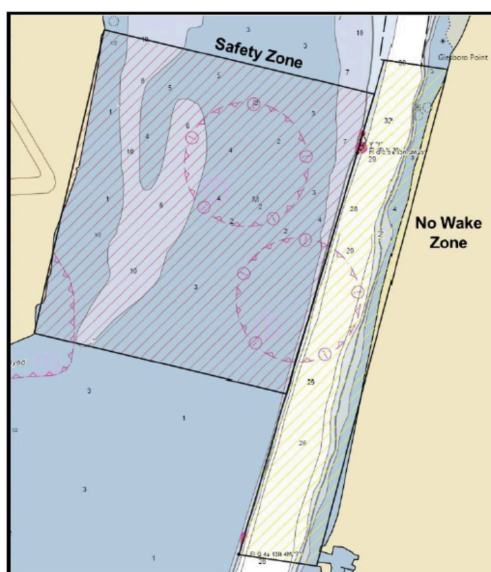
18. SAFETY REGULATIONS

- 18.1 RRS 40 ("Personal Buoyancy") is replaced by: "All competitors are required to wear PFDs or buoyancy aids while racing."
- 18.2 A boat that retires from a race shall notify the Race Committee as soon as practicable.
- 18.3 A boat that leaves the racing area prior to the end of racing shall notify the Race Committee as soon as practicable.

19. TROPHIES

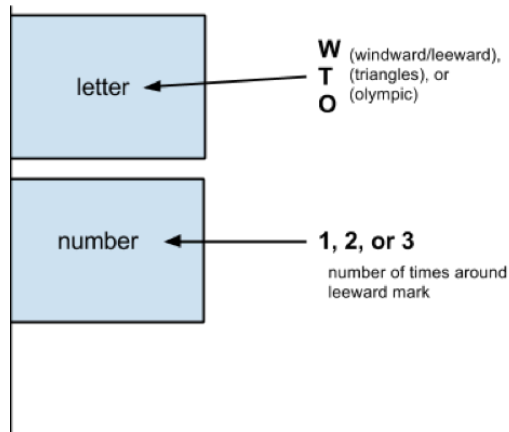
Trophies will be awarded Sunday afternoon with the depth based on the number of registrants in each class registered before the end of the discounted early registration period.

ATTACHMENT: SAFETY ZONE DIAGRAMS



ATTACHMENT: COURSES and MARKS

TWO FLAGS, ONE OVER THE OTHER, (ON THE SIGNAL BOAT) INDICATE THE COURSE



Leave all marks to port. The L (leeward) mark may be a gate, i.e. two marks 7 or 8 boat lengths apart.

W – Marks: W (windward) and L (leeward)

Start, go around the two marks, repeat if necessary until you've passed the leeward mark the required number of times, finish.

T – Marks: W (windward), J (jibe), and L (leeward)

Start, go around the three marks, repeat if necessary until you've passed the leeward mark the required number of times, finish.

O – Marks: 1 triangle (W, J, and L) followed by windward/leewards (W and L)

Start, go around the W, J, and L marks (1 triangle), go around the W & L marks, repeat if necessary until you've passed the leeward mark the required number of times, finish. (Examples: O/2 = 1 triangle + 1 w/l = 2 times past L mark, O/3 = 1 triangle + 2 w/l = 3 times past L mark)

The start and finish lines are between the W & L marks off of the signal boat.

The W, L, and J marks will be orange cylinders. The start pin will be a white cylinder with a red flag on top. The finish pin will be a white cylinder with a blue flag on top.